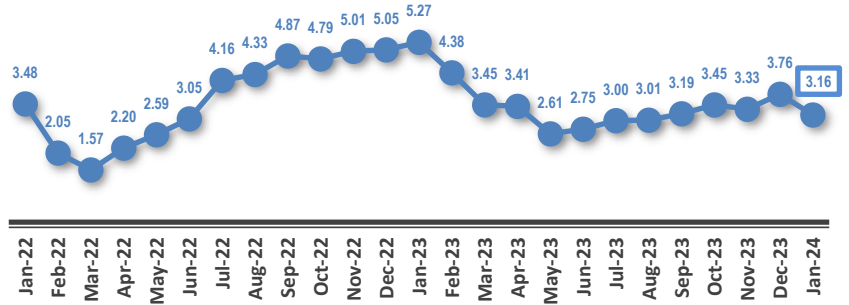
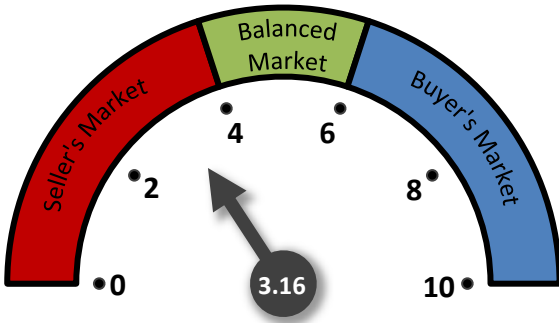
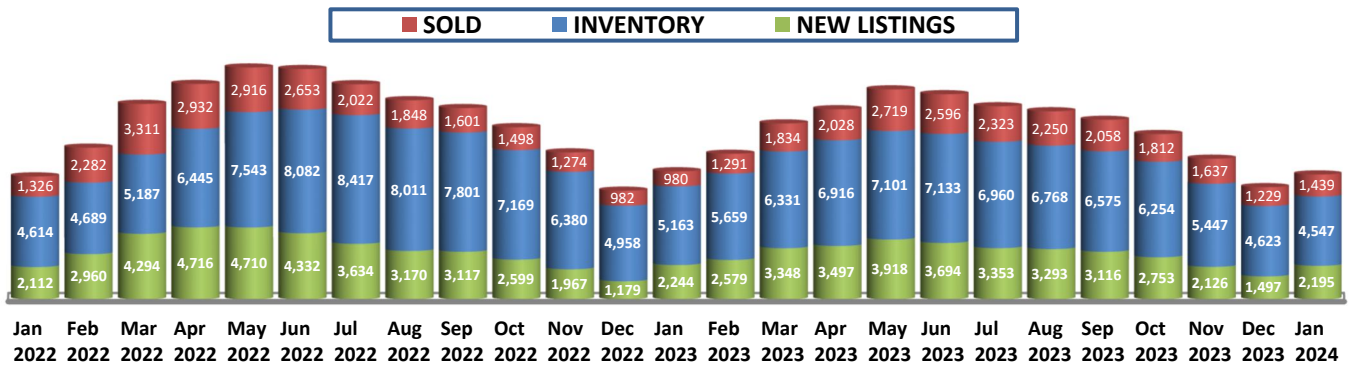


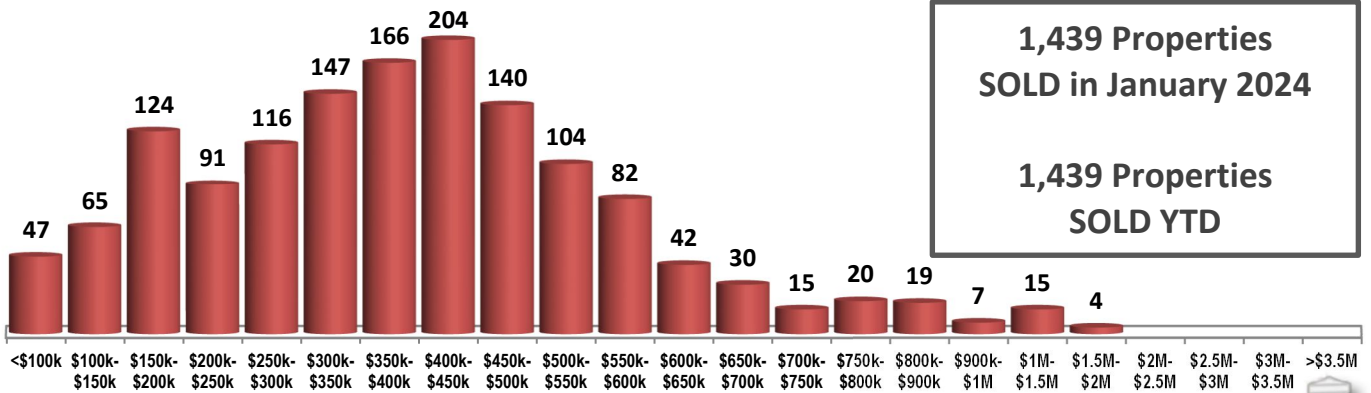
MONTHS OF INVENTORY



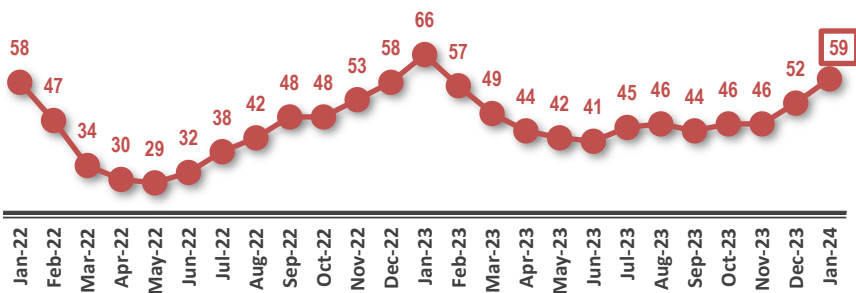
SOLD / INVENTORY / NEW LISTINGS



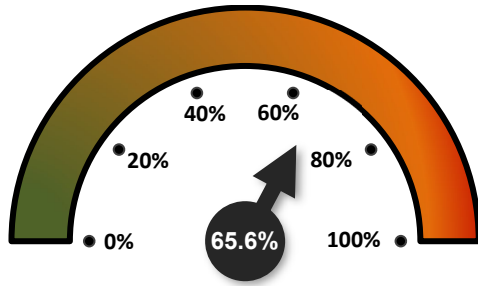
SOLD PROPERTIES BY PRICE RANGE



AVERAGE DAYS ON THE MARKET

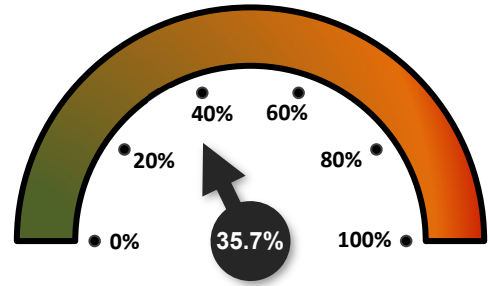


SALES-TO-NEW LISTINGS RATIO



↓ FROM 82.1% IN DECEMBER 2023
↑ FROM 43.7% IN JANUARY 2023

ODDS OF SELLING IN 90 DAYS OR LESS

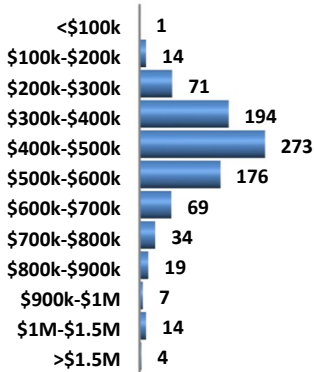


↓ FROM 36.1% IN DECEMBER 2023
↑ FROM 25.8% IN JANUARY 2023

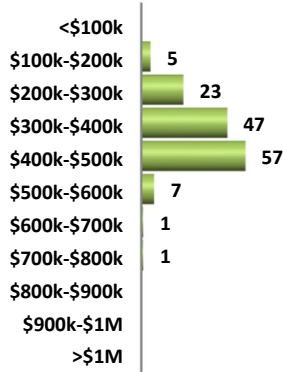
DETAILS BY PROPERTY TYPE

| | DETACHED | SEMI-DETACHED | ROW / TOWNHOUSES | APARTMENT CONDOS |
|-----------------------------|-----------|---------------|------------------|------------------|
| AVERAGE SOLD PRICE | \$484,365 | \$378,421 | \$268,948 | \$192,660 |
| MEDIAN SOLD PRICE | \$450,000 | \$394,500 | \$265,500 | \$166,850 |
| SOLD PROPERTIES | 876 | 141 | 194 | 228 |
| SOLD PROPERTIES YTD | 876 | 141 | 194 | 228 |
| NEW LISTINGS | 1,296 | 181 | 270 | 448 |
| SALES-TO-NEW LISTINGS RATIO | 67.6% | 77.9% | 71.9% | 50.9% |
| AVERAGED DAYS ON THE MARKET | 60 | 53 | 53 | 65 |

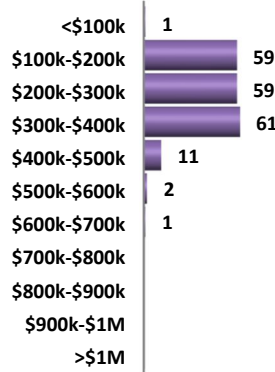
DETACHED HOMES SOLD BY PRICE RANGE



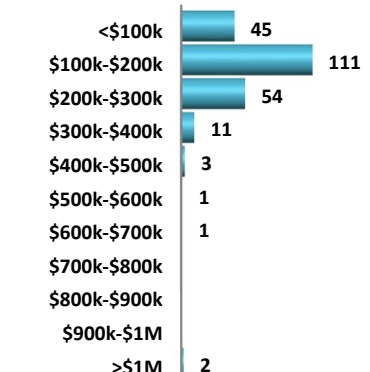
SEMI-DETACHED HOMES SOLD BY PRICE RANGE



ROW / TOWNHOUSES SOLD BY PRICE RANGE



APARTMENT CONDOMINIUMS SOLD BY PRICE RANGE



AVERAGE SOLD PRICES OVER 2 YEARS

