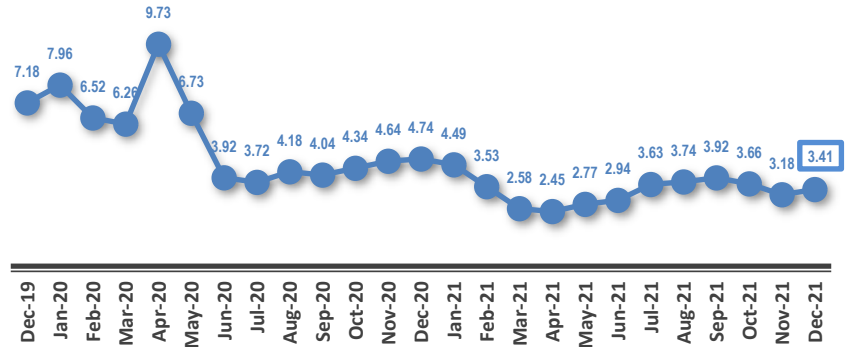
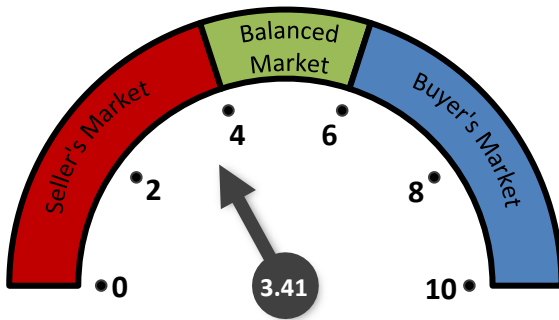
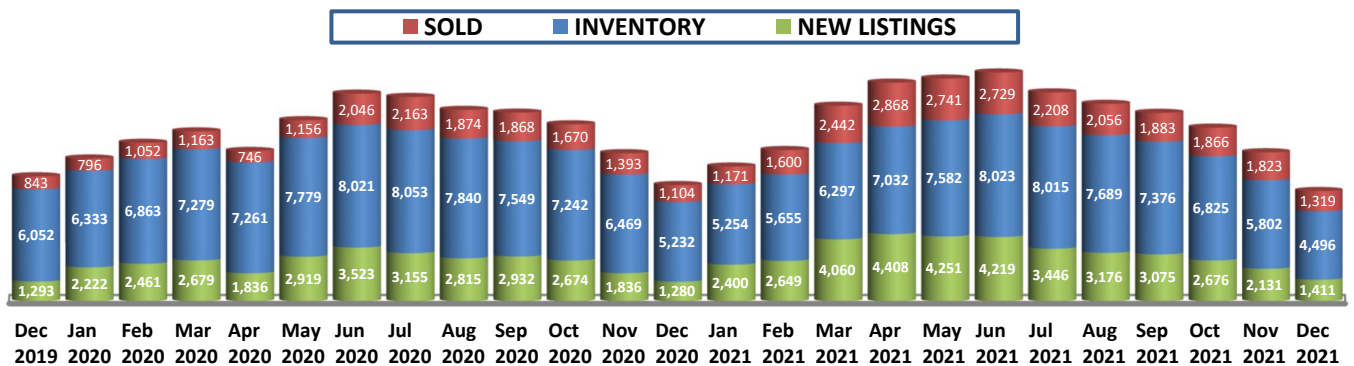


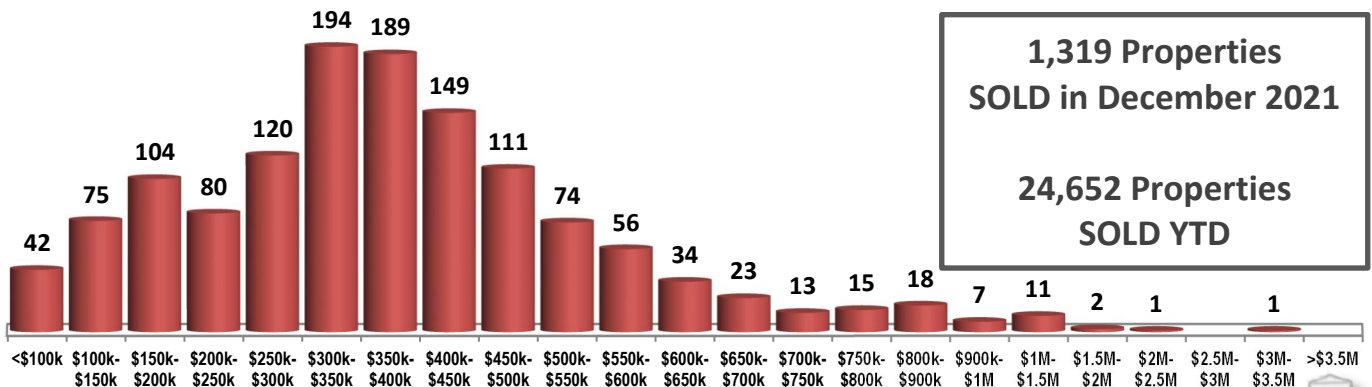
MONTHS OF INVENTORY



SOLD / INVENTORY / NEW LISTINGS



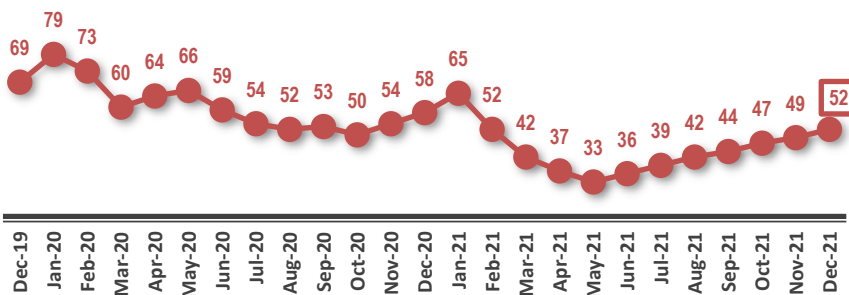
SOLD PROPERTIES BY PRICE RANGE



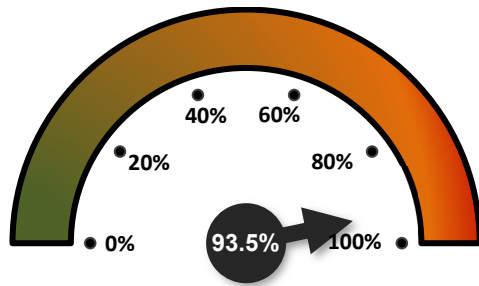
1,319 Properties SOLD in December 2021

24,652 Properties SOLD YTD

AVERAGE DAYS ON THE MARKET



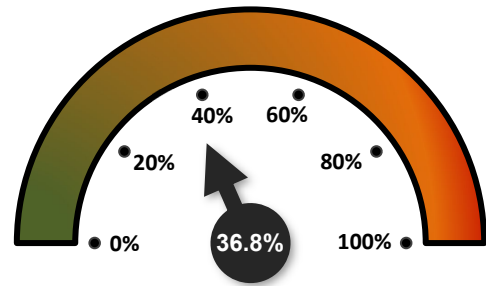
SALES-TO-NEW LISTINGS RATIO



↑ FROM 85.5% IN NOVEMBER 2021

↑ FROM 86.3% IN DECEMBER 2020

ODDS OF SELLING IN 90 DAYS OR LESS



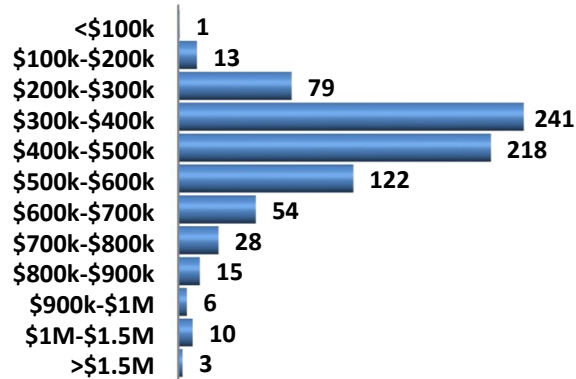
↑ FROM 35.8% IN NOVEMBER 2021

↑ FROM 31.2% IN DECEMBER 2020

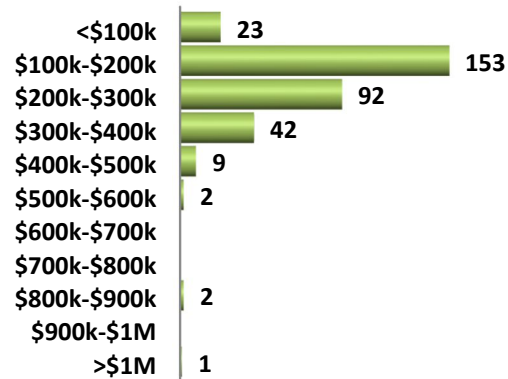
DETAILS BY PROPERTY TYPE

	DETACHED SINGLE FAMILY HOMES	CONDOMINIUMS	DUPLEXES / ROW HOUSES
AVERAGE SOLD PRICE	\$462,110	\$217,065	\$362,906
MEDIAN SOLD PRICE	\$423,000	\$189,950	\$350,000
SOLD PROPERTIES	790	324	167
SOLD PROPERTIES YTD	15,376	5,691	3,008
NEW LISTINGS	706	502	167
SALES-TO-NEW LISTINGS RATIO	111.9%	64.5%	100.0%
AVERAGED DAYS ON THE MARKET	46	65	47

SINGLE FAMILY DETACHED SOLD BY PRICE RANGE



CONDOMINIUMS SOLD BY PRICE RANGE



AVERAGE SOLD PRICES OVER 2 YEARS

