

Courtesy Of Tyler J Ellis Of Real Broker

\$785,000 - 3411 Macneil Link Link, Edmonton

MLS® #E4448380

\$785,000

4 Bedroom, 3.50 Bathroom, 2,358 sqft

Single Family on 0.00 Acres

Magrath Heights, Edmonton, AB

Welcome to this stunning family home in the sought-after community of Magrath Heights! Just steps from schools, parks, and scenic walking trails, this beautifully maintained property offers comfort and convenience. The main floor features rich hardwood and an open-concept layout, anchored by a cozy 3-sided gas fireplace between the living and dining areas. The kitchen is bright and functional, with an island, ample cabinetry, and natural light. Upstairs you'll find 3 spacious bedrooms, including a primary with a walk-in closet, ensuite, and a 3-sided fireplace for added warmth. A bright bonus room offers space for a home office or playroom. The fully finished basement adds a 4th bedroom, full bath, and large family room—perfect for guests or growing families. Enjoy the landscaped and fenced backyard with a covered deck ideal for relaxing or entertaining, big enough for RV Storage. This home combines space, style, and location—don't miss out!

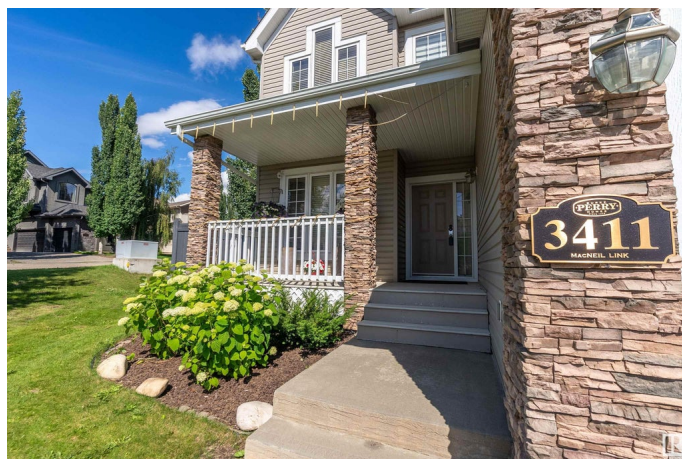
Built in 2006

Essential Information

MLS® # E4448380

Price \$785,000

Bedrooms 4



Bathrooms	3.50
Full Baths	3
Half Baths	1
Square Footage	2,358
Acres	0.00
Year Built	2006
Type	Single Family
Sub-Type	Detached Single Family
Style	2 Storey
Status	Active

Community Information

Address	3411 Macneil Link Link
Area	Edmonton
Subdivision	Magrath Heights
City	Edmonton
County	ALBERTA
Province	AB
Postal Code	T6R 0H5

Amenities

Amenities	Air Conditioner, Deck, Front Porch, See Remarks
Parking	Double Garage Attached, Heated

Interior

Interior Features	ensuite bathroom
Appliances	Air Conditioning-Central, Dishwasher-Built-In, Dryer, Garage Control, Garage Opener, Hood Fan, Refrigerator, Stove-Electric, Vacuum System Attachments, Vacuum Systems, Washer, Window Coverings
Heating	Forced Air-1, Natural Gas
Fireplace	Yes
Fireplaces	Three Sided
Stories	3
Has Basement	Yes
Basement	Full, Finished

Exterior

Exterior	Wood, Brick, Vinyl
Exterior Features	Corner Lot, Fenced, Park/Reserve, Playground Nearby, Public

Transportation, Schools, Shopping Nearby

Roof	Asphalt Shingles
Construction	Wood, Brick, Vinyl
Foundation	Concrete Perimeter

School Information

Elementary	Nellie Carlson School
Middle	Nellie Carlson School
High	Lillian Osborne School

Additional Information

Date Listed	July 15th, 2025
Days on Market	12
Zoning	Zone 14

DATA IS DEEMED RELIABLE BUT IS NOT GUARANTEED ACCURATE BY THE REALTORS® ASSOCIATION OF EDMONTON. COPYRIGHT 2025 BY THE REALTORS® ASSOCIATION OF EDMONTON. ALL RIGHTS RESERVED. Trademarks are owned or controlled by the Canadian Real Estate Association (CREA) and identify real estate professionals who are members of CREA (REALTOR®, REALTORS®) and/or the quality of services they provide (MLS®, Multiple Listing Service®)

Listing information last updated on July 27th, 2025 at 12:47pm MDT