

## \$714,900 - 21 Kirklees Place, Sherwood Park

MLS® #E4446720

**\$714,900**

5 Bedroom, 3.50 Bathroom, 2,530 sqft

Single Family on 0.00 Acres

Nottingham, Sherwood Park, AB

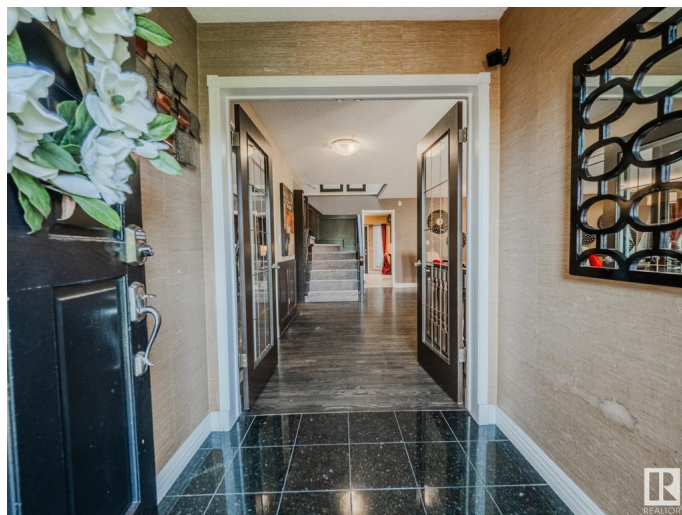
Welcome to this stunning 2-storey home located in the prestigious neighbourhood of Nottingham! 2,529 sqft of beautifully finished living space, this home features **HARDWOOD** and **TILE** throughout the main floor. The open concept kitchen is a chef's dream with **GRANITE** countertops, **STAINLESS STEEL** APPLIANCES, and flows seamlessly into the cozy living room w/ a **WOOD-BURNING FIREPLACE**. There's also a formal dining room, 2pc bath, and a versatile bedroom/office on the main. Upstairs you'll find 3 spacious bedrooms, including a luxurious primary suite with a spa-like 5pc ensuite featuring a **JACUZZI**, plus an additional 3pc bath. The huge basement rec room, 5th bedroom with massive walk-in closet, and another 3pc bath add incredible space for family living. Step outside to your backyard oasis with **MAGAZINE-WORTHY LANDSCAPING**, a **FIRE-PIT** with gazebo, and total privacy. 26x24 **HEATED GARAGE** is currently set up as an office (easy to remove) **TRAILER PARKING**, and new architectural shingles (2023) complete this dream home!

Built in 1986

### Essential Information

MLS® # E4446720

Price \$714,900



Bedrooms	5
Bathrooms	3.50
Full Baths	3
Half Baths	1
Square Footage	2,530
Acres	0.00
Year Built	1986
Type	Single Family
Sub-Type	Detached Single Family
Style	2 Storey
Status	Active

### Community Information

Address	21 Kirklees Place
Area	Sherwood Park
Subdivision	Nottingham
City	Sherwood Park
County	ALBERTA
Province	AB
Postal Code	T8A 5H2

### Amenities

Amenities	Air Conditioner, Closet Organizers, Deck, Fire Pit, Gazebo, No Animal Home, No Smoking Home
Parking	Double Garage Attached

### Interior

Interior Features	ensuite bathroom
Appliances	Air Conditioning-Central, Dishwasher-Built-In, Dryer, Hood Fan, Oven-Built-In, Oven-Microwave, Refrigerator, Storage Shed, Stove-Countertop Electric, Washer, Window Coverings
Heating	Forced Air-2, Natural Gas
Fireplace	Yes
Fireplaces	Tile Surround
Stories	3
Has Basement	Yes
Basement	Full, Finished

### Exterior

Exterior	Wood, Brick, Vinyl
Exterior Features	Fenced, Fruit Trees/Shrubs, Landscaped, Playground Nearby, Public Transportation, Schools, Shopping Nearby
Roof	Asphalt Shingles
Construction	Wood, Brick, Vinyl
Foundation	Concrete Perimeter

### **School Information**

Elementary	Wes Hosford Elementary
Middle	F.R. Haythorne Junior High
High	Bev Facey Community High

### **Additional Information**

Date Listed	July 9th, 2025
Days on Market	19
Zoning	Zone 25

DATA IS DEEMED RELIABLE BUT IS NOT GUARANTEED ACCURATE BY THE REALTORS® ASSOCIATION OF EDMONTON. COPYRIGHT 2025 BY THE REALTORS® ASSOCIATION OF EDMONTON. ALL RIGHTS RESERVED. Trademarks are owned or controlled by the Canadian Real Estate Association (CREA) and identify real estate professionals who are members of CREA (REALTOR®, REALTORS®) and/or the quality of services they provide (MLS®, Multiple Listing Service®)

Listing information last updated on July 28th, 2025 at 3:33pm MDT