

## \$207,000 - 1801 9835 113 Street, Edmonton

MLS® #E4446018

**\$207,000**

2 Bedroom, 1.00 Bathroom, 1,066 sqft  
Condo / Townhouse on 0.00 Acres

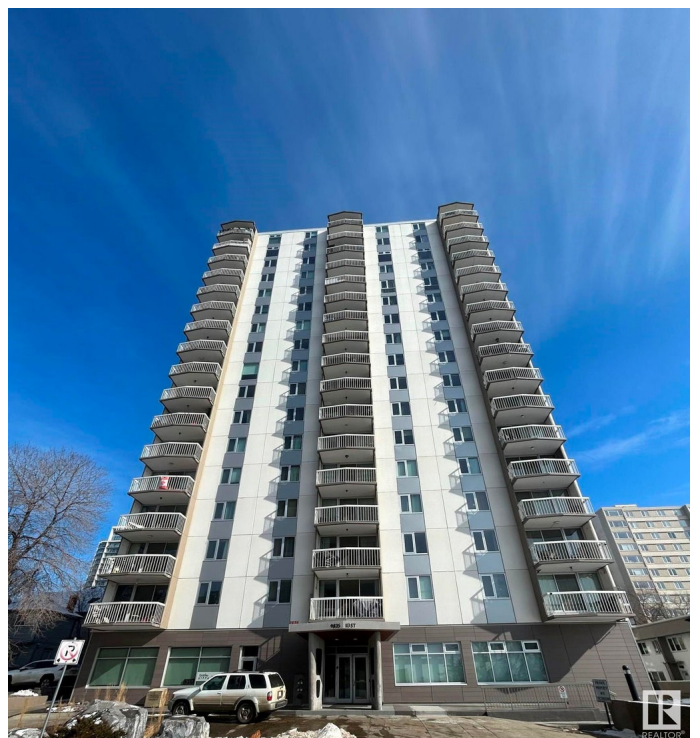
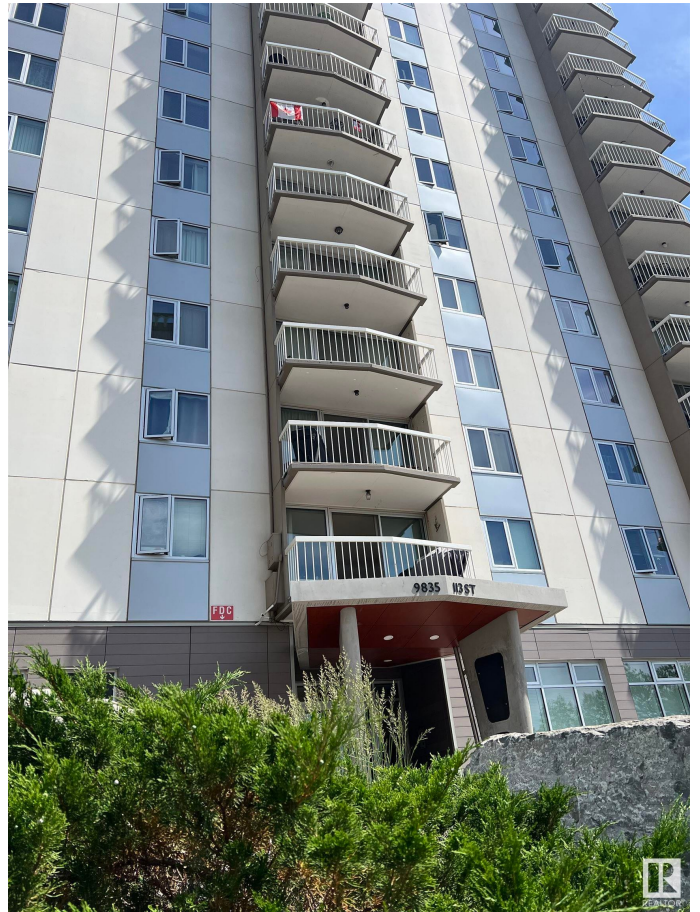
W&#x26;#x2013;hkw&#x2013;nt&#x2013;win, Edmonton, AB

BEYOND UNIQUE! This large 2 bedroom PENTHOUSE with SPECTACULAR unobstructed VIEWS of our wonderful river valley and golf course is sure to please. Nestled right on the banks of the river with access to walking trails at your front door, shopping and transit access minutes away. Large balcony and oversize windows give endless views. This amazing home is accessed by private staircase accessible to only penthouse owners. There is a very well appointed gym, social areas, roof top and ground floor patio for all to enjoy. Watch the fireworks from the 19th floor of this one of a kind location. One heated underground parking included. This building is top notch with major recent upgrades evident including brand new elevators. NOTE\*\*Condo fees include all utilities. Unit has been freshly painted throughout and brand new luxury vinyl flooring professionally installed. Laundry on every floor. There is even an onsite restaurant! Put this amazing property at the top of your list, it is amazing!

Built in 1969

### Essential Information

MLS® #	E4446018
Price	\$207,000



Bedrooms	2
Bathrooms	1.00
Full Baths	1
Square Footage	1,066
Acres	0.00
Year Built	1969
Type	Condo / Townhouse
Sub-Type	Apartment High Rise
Style	Penthouse
Status	Active

### Community Information

Address	1801 9835 113 Street
Area	Edmonton
Subdivision	WÃ©hkwÃ©ntÃ©win
City	Edmonton
County	ALBERTA
Province	AB
Postal Code	T5K 1N4

### Amenities

Amenities	No Animal Home, No Smoking Home, Parking-Visitor, Party Room, Patio, Social Rooms, Storage-In-Suite, Vinyl Windows, Rooftop Deck/Patio
Parking Spaces	1
Parking	Heated, Parkade, Underground

### Interior

Appliances	Dishwasher-Built-In, Microwave Hood Fan, Refrigerator, Stove-Electric
Heating	Hot Water, Natural Gas
# of Stories	18
Stories	1
Has Basement	Yes
Basement	None, No Basement

### Exterior

Exterior	Concrete, Composition, Stucco
Exterior Features	Golf Nearby, No Through Road, Public Transportation, River Valley View, River View, Schools, Shopping Nearby, View City, View

	Downtown
Roof	See Remarks
Construction	Concrete, Composition, Stucco
Foundation	Concrete Perimeter

**Additional Information**

Date Listed	July 3rd, 2025
Days on Market	6
Zoning	Zone 12
Condo Fee	\$970



DATA IS DEEMED RELIABLE BUT IS NOT GUARANTEED ACCURATE BY THE REALTORS® ASSOCIATION OF EDMONTON. COPYRIGHT 2025 BY THE REALTORS® ASSOCIATION OF EDMONTON. ALL RIGHTS RESERVED. Trademarks are owned or controlled by the Canadian Real Estate Association (CREA) and identify real estate professionals who are members of CREA (REALTOR®, REALTORS®) and/or the quality of services they provide (MLS®, Multiple Listing Service®)

Listing information last updated on July 9th, 2025 at 9:18am MDT