

\$0 - 8211 102 Street, Edmonton

MLS® #E4424931

\$0

0 Bedroom, 0.00 Bathroom,
Retail on 0.00 Acres

Strathcona, Edmonton, AB

An incredible opportunity awaits in the heart of Whyte Avenue, Edmonton's premier shopping and entertainment district. This 1,698 SF retail space is now available for lease, offering high foot traffic, excellent visibility, and a vibrant atmosphere ideal for a variety of businesses. This is a rare chance to secure a retail space in one of Edmonton's most sought-after commercial corridors. Whether you're launching a new business or expanding an existing one, this location provides the visibility and customer base to thrive.

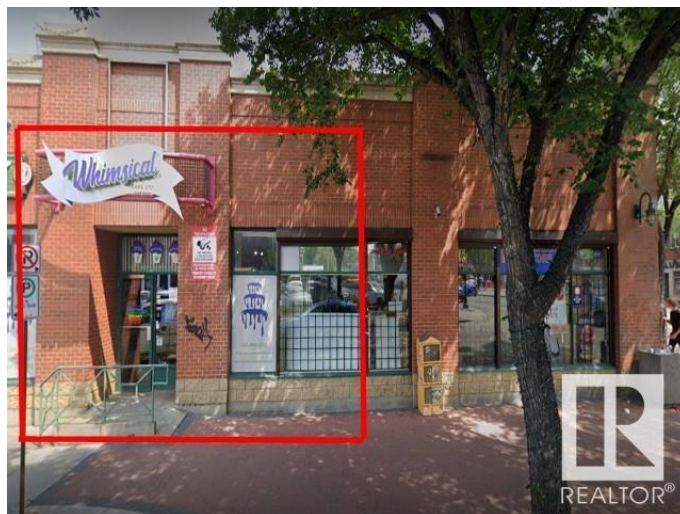
Built in 1980

Essential Information

MLS® #	E4424931
Bathrooms	0.00
Acres	0.00
Year Built	1980
Type	Retail
Status	Active

Community Information

Address	8211 102 Street
Area	Edmonton
Subdivision	Strathcona
City	Edmonton



County	ALBERTA
Province	AB
Postal Code	T6E 4A5

Exterior

Exterior	Mixed
Construction	Mixed

Additional Information

Date Listed	March 9th, 2025
Days on Market	131
Zoning	Zone 15

DATA IS DEEMED RELIABLE BUT IS NOT GUARANTEED ACCURATE BY THE REALTORS® ASSOCIATION OF EDMONTON. COPYRIGHT 2025 BY THE REALTORS® ASSOCIATION OF EDMONTON. ALL RIGHTS RESERVED.Trademarks are owned or controlled by the Canadian Real Estate Association (CREA) and identify real estate professionals who are members of CREA (REALTOR®, REALTORS®) and/or the quality of services they provide (MLS®, Multiple Listing Service®)

Listing information last updated on July 17th, 2025 at 9:32pm MDT